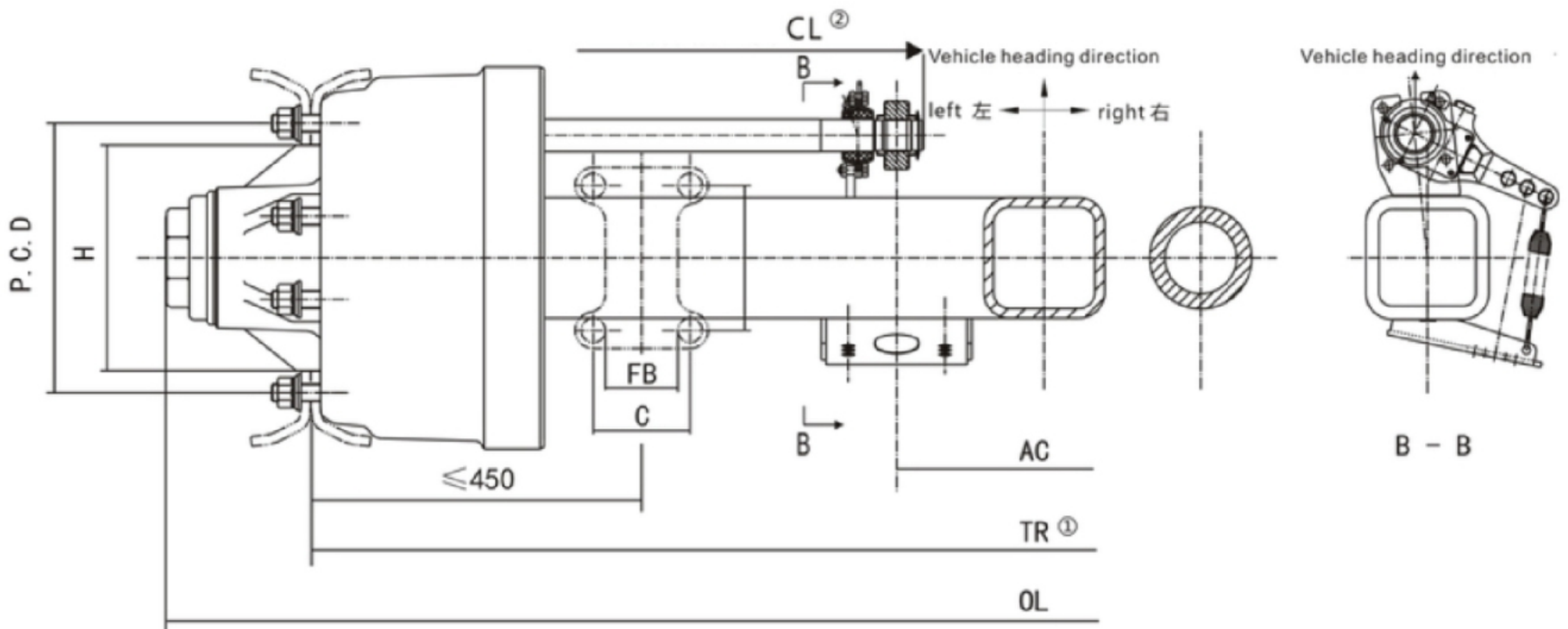
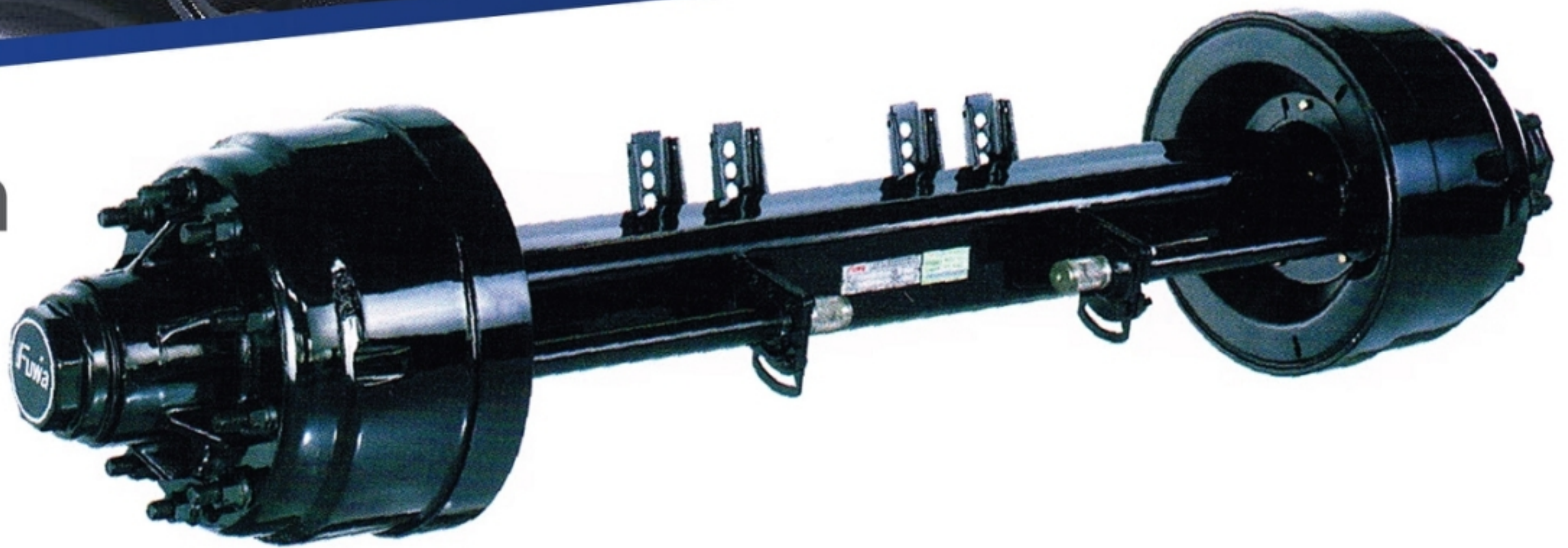




ข้อมูลเฉพาะ



เพลาล้อ 150

Axle Type	105 (km/h)	"S" Cam Brake	Track	Center distance of chamber		Wheel Fixing			Total Length OL (mm)	Recommended Wheel	Hub Bearing	Weight (kg)
		Ø x Width (mm)		TR (mm)	camshaft length CL(mm)	AC (mm)	Studs (mm)	P.C.D.				
F2402XE01AA	13000	Ø420x180	1840	543	387	8xM20x1.5 JAP	285	221	2203	≥7.5v-20	518445/10	340
F2402XE01AB	13000	Ø420x180	1840	543	387	8xM20x1.5 JAP	285	221	2203	≥7.5v-20	518445/10	341
F2403XE01AA	13000	Ø420x180	1840	543	387	10xM22x1.5 ISO	335	281	2203	≥7.5v-20	518445/10	354
F2403XE02AB	13000	Ø420x180	1840	543	387	10xM22x1.5 ISO	335	281	2203	≥7.5v-20	518445/10	355
F2407	12000	Ø420x180	1840	543	390	10xM22x1.5 ISO	335	281	2131	≥8.25v-22.5	IN-HM218210/48 OUT-HM212011/49	315

เพลากาน 127

Axle Type	105 (km/h)	"S" Cam Brake	Track	Center distance of chamber		Wheel Fixing			Total Length OL (mm)	Recommended Wheel	Hub Bearing	Weight (kg)
		Ø x Width (mm)		TR (mm)	camshaft length CL(mm)	AC (mm)	Studs (mm)	P.C.D.				
F2003XE01AA	11500	Ø420x180	1840	621	234	10xM20x1.5 ISO	335	281	2200	≥7.5v-20	518445/10	349
F2007	12000	Ø420x180	1840	610	254	10xM20x1.5 ISO	335	281	2130	≥8.25v-22.5	IN-HM218210/48 OUT-HM212011/49	320