

BRACKET OPTIONS

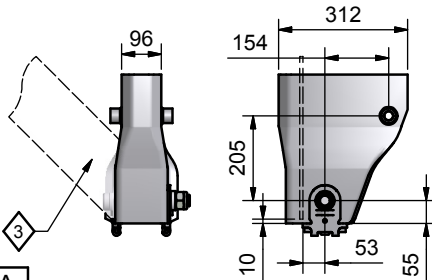
HEAVY DUTY

11 T.

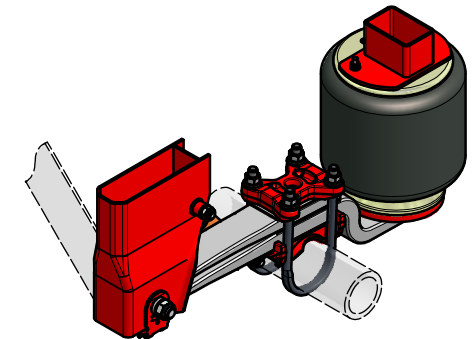
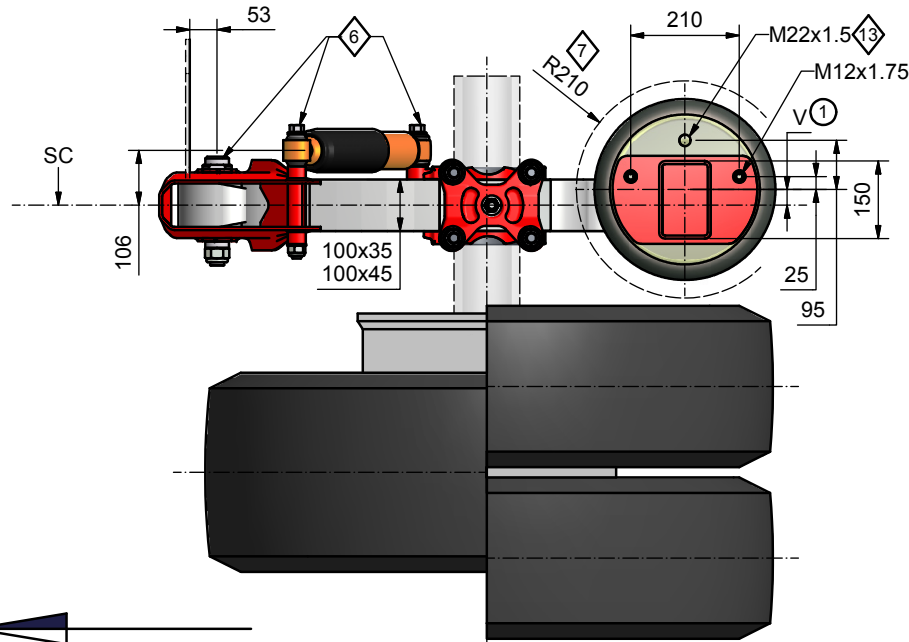
DRAWING SHOWS:

H.A.GE.5.36L.375-475.30

A45 HANGERBRACKET WITH WELDED BRACING
(ALIGNMENT IN AXLE CLAMPING)

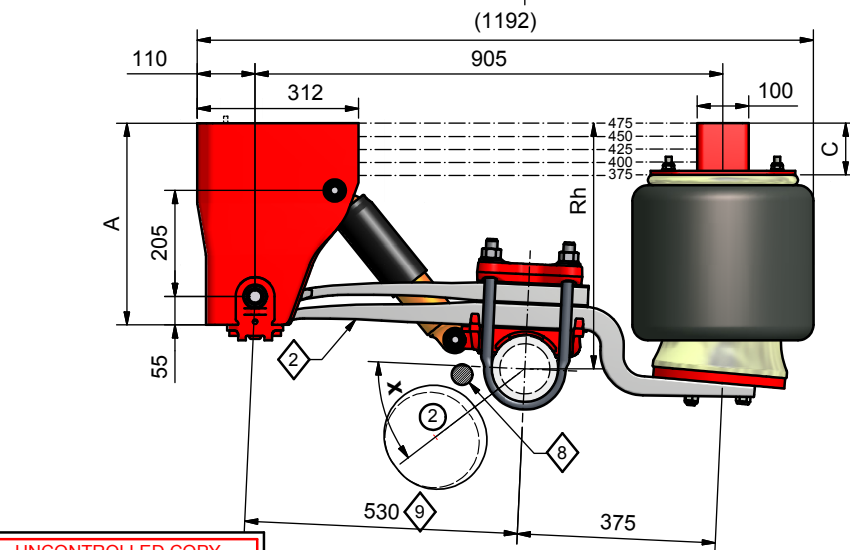


A



| SC (mm) | Max. Vehicle Center of Gravity Single Tyres | |
|---------|---|-----------------------|
| | h (mm) | v (m/s ²) |
| 980 | 2275 | 0,34g |
| 1000 | 2310 | 0,34g |
| 1100 | 2395 | 0,34g |
| 1200 | 2430 | 0,34g |
| 1300 | 2455 | 0,34g |
| 1400 | 2480 | 0,34g |

| SC (mm) | Max. Vehicle Center of Gravity Twin Tyres | |
|-----------------|---|-----------------------|
| | h (mm) | v (m/s ²) |
| 980 | 2200 | 0,34g |
| 1000 | 2210 | 0,34g |
| 1100 | 2250 | 0,34g |
| 1200 | 2280 | 0,34g |
| 1300 | 2305 | 0,34g |
| 1400 | 2325 | 0,34g |



| Axle | R _H | M _H | B | L _H | Max _{OUT} | A | C | V | S | KG |
|------|----------------|----------------|-----|----------------|--------------------|-----|-----|----|-----|-----|
| Ø127 | 375 | 270 | 285 | 475 | 544 | 285 | 0 | 30 | 370 | 213 |
| Ø127 | 400 | 295 | 310 | 500 | 570 | 310 | 30 | 30 | 370 | 221 |
| Ø127 | 425 | 320 | 335 | 525 | 595 | 335 | 50 | 30 | 370 | 224 |
| Ø127 | 450 | 345 | 360 | 550 | 620 | 360 | 75 | 30 | 370 | 227 |
| Ø127 | 475 | 370 | 385 | 575 | 645 | 390 | 100 | 30 | 370 | 230 |
| Ø146 | 385 | 280 | 295 | 485 | 555 | 285 | 0 | 30 | 370 | 215 |
| Ø146 | 410 | 305 | 320 | 510 | 580 | 310 | 30 | 30 | 370 | 223 |
| Ø146 | 435 | 330 | 345 | 535 | 605 | 335 | 50 | 30 | 370 | 226 |
| Ø146 | 460 | 355 | 370 | 560 | 630 | 360 | 75 | 30 | 370 | 229 |
| Ø146 | 485 | 380 | 395 | 585 | 655 | 390 | 100 | 30 | 370 | 232 |
| □120 | 380 | 275 | 290 | 480 | 550 | 285 | 0 | 30 | 370 | 222 |
| □120 | 405 | 300 | 315 | 505 | 575 | 310 | 30 | 30 | 370 | 230 |
| □120 | 430 | 325 | 340 | 530 | 600 | 335 | 50 | 30 | 370 | 233 |
| □120 | 455 | 350 | 365 | 555 | 625 | 360 | 75 | 30 | 370 | 236 |
| □120 | 480 | 375 | 390 | 580 | 650 | 390 | 100 | 30 | 370 | 239 |
| □150 | 385 | 280 | 295 | 485 | 550 | 285 | 0 | 30 | 370 | 226 |
| □150 | 410 | 305 | 320 | 510 | 575 | 310 | 30 | 30 | 370 | 234 |
| □150 | 435 | 330 | 345 | 535 | 600 | 335 | 50 | 30 | 370 | 237 |
| □150 | 460 | 355 | 370 | 560 | 625 | 360 | 75 | 30 | 370 | 240 |
| □150 | 485 | 380 | 395 | 585 | 650 | 390 | 100 | 30 | 370 | 243 |

* TOLERANCES ON MEASURED VALUES ARE ± 5 MM.

NOTES

- OFFSET OPTIONS: 30-50-95.
- ALWAYS CHECK BRAKE ANGLE WHEN □120 & □150 AXLES ARE BEING USED.
- CROSSED OUT OPTIONS ARE NOT RECOMMENDED OR POSSIBLE.
- IN CASE OF DIFFERENT TYRES, LOAD, AXLE OR WHEEL TRACK, PLEASE CONTACT WEWELER. THESE VALUES ARE BASED ON 445/65 R22.5" SINGLE TYRES (Ø127x20 AXLE - 2040 TRACK) AND 275/70 R22.5" TWIN TYRES (Ø127x20 AXLE - 1850 TRACK). STRESSES IN THE AXLE BEAM ARE NOT TAKEN INTO ACCOUNT.

UNCONTROLLED COPY
NO RIGHTS CAN BE CLAIMED FROM THIS DOCUMENT

| | | | | | | | | | | |
|--------|--------|---------|--------|-----------------------------|-------------|---------------|--------|--------|--------|--------|
| | | | | | | | | | | |
| X= 40° | IM-052 | W1-DH/B | T-SYST | E-H.A. GE.5.36L. 375-475.30 | ASK WEWELER | WM-A04 WM-A10 | WM-A01 | WM-C08 | WM-C01 | IM-053 |

THIS DOCUMENT IS PROPERTY OF VDL WEWELER B.V. COPYING, ANNOUNCING, OR GIVE A THIRD PARTY PERUSAL OF ANY KIND, IS PROHIBITED WITHOUT APPROVAL OF OWNER

| | | | | |
|--|-----------|-----|------|-----------|
| VDL Weweler VDL WEWELER B.V. P.O. BOX 142 7300 AC APELDOORN THE NETHERLANDS | DATE | BY | APP. | PROJECT: |
| | 22-6-2006 | RTS | | WAP06-102 |
| LAST REV. | 26-8-2010 | RTS | | WAP10-044 |
| DOC.NR: | WE0015932 | | | REV: |